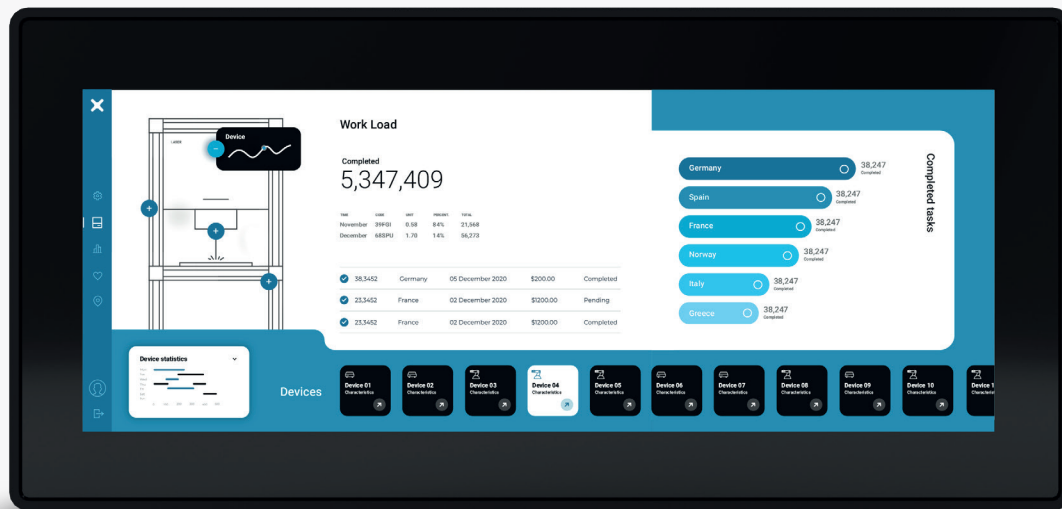


Why JMobile

## Unlock Insight, Clarify Visualization

Build a link with your machinery, speak the same language as your PLCs and boost productivity: try JMobile Edge Visualization capabilities in the industrial business.



## Advanced Data Visualization for Industrial Edge Management

**JMobile integrates SVG technology to revolutionize HMI development in industrial automation.** By offering an extensive library of graphical elements and a modern widget gallery, it simplifies programming and meets sophisticated graphic design needs, enhancing data clarity and user interaction.

The software's **easy editor** champions a low-code approach, featuring **drag-and-drop functionality**, with numerous standard widgets immediately available, to streamline time to market. Simultaneously, JMobile, which supports **JavaScript**, enhances **software's adaptability for custom needs** across various solutions and contexts: customization is a cornerstone, allowing for the creation and sharing of unique widgets, which benefits from JMobile's experience. This capability ensures that any modifications to widgets, essential for project updates, are applied universally, significantly reducing repetitive tasks and accelerating project cycles.

This tool is not just about advanced visualization; it's about **empowering developers to efficiently translate complex data into actionable insights**, optimizing HMI development speed, and facilitating customization to meet specific project requirements, marking a significant leap forward in industrial edge management solutions.

**JMobile** is a distinguished software suite in the industrial sector, offering robust communication solutions for the **Industrial Internet of Things (IIoT)**.

This software is designed to facilitate seamless interaction between industrial machines and digital platforms, encompassing a range of functionalities **from edge to cloud connectivity**, device management, process management, and data visualization.

**JMobile®**

The Embedded Software  
by EXOR International

# The X Platform world

In the dynamic world of industrial automation, the X Platform exists to bridge the gap between the aspirations of machine builders and the real-world needs of factory owners. The platform serves as a comprehensive toolbox, helping you address current challenges while preparing for future ones.

The X Platform is more than just technology; it's a partnership. It empowers you to tailor solutions to your unique challenges, ensuring that you remain at the forefront of industrial innovation. The goal is to give machine builders the freedom to focus on what they do best: creating outstanding machines that meet the needs of factory owners like you.



## What is a Today's Need...

1. Edge Security - Protecting your data and your business.
2. Remote Access & VPN - Simplifying system integration, providing you with the ability to monitor and adjust processes anywhere.
3. Fleet Management - Making updates remotely: time and resource saving.

## ... a Tomorrow's Want ...

1. Remote & Condition Monitoring - Giving you the tools for proactive diagnostics.
2. OEE & Energy Efficiency - Monitoring and managing resources for sustainable growth.
3. Performance Consultancy - Offering insights into optimizing your machinery's potential.

## ... and a Future Vision?

1. Marketplace Integration - Creating potential channels for resource and information exchange.
2. Virtual Logic Control - Preparing for the possibilities of AI-driven process enhancements.

Your Challenge,  
Your Solution,  
Our Technology

## Keep in Touch!

### Contact us

[sales.it@exorint.com](mailto:sales.it@exorint.com)  
+39 045 875 0404



EXOR

JMobile

CORVINA

ONE

DIGIBELT

Next-Steel  
Solutions

AXEL

FACTORYAL