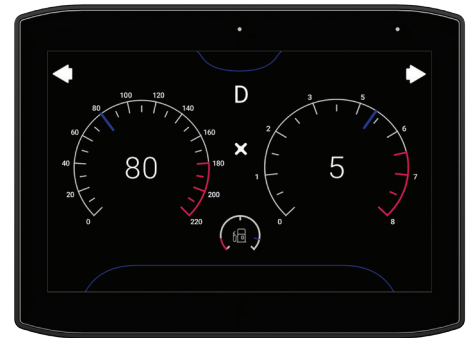


XA112 - Preliminary Tech Note

12" Capacitive Sunlight-readable, IP66/69K, 2x CAN, 1x Eth., Wi-Fi, Multiprotocol, JMobile runtime

- 12" capacitive display, sunlight-readable for visibility in all lighting
- IP66/69K-certified for high protection against water, dust, and pressure
- 2x CAN interfaces for seamless integration with vehicle systems
- 1x Ethernet port for networking flexibility
- Multiprotocol support for industrial and mobile standards
- JMobile runtime enables customizable UIs, data logging, and remote access



Highlights

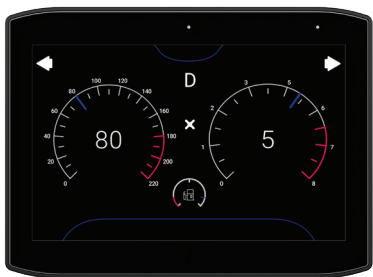
Engineered for the demands of mobile machinery and commercial vehicles, this 12" capacitive sunlight-readable HMI brings powerful edge intelligence to harsh, dynamic environments. With a robust IP66/69K-rated housing, and built-in Wi-Fi and CAN interfaces, it supports real-time control, monitoring, and customization right at the source.

Whether in construction, agriculture, logistics, or off-highway applications, this HMI delivers rugged reliability with the flexibility of JMobile runtime and a multiprotocol framework.

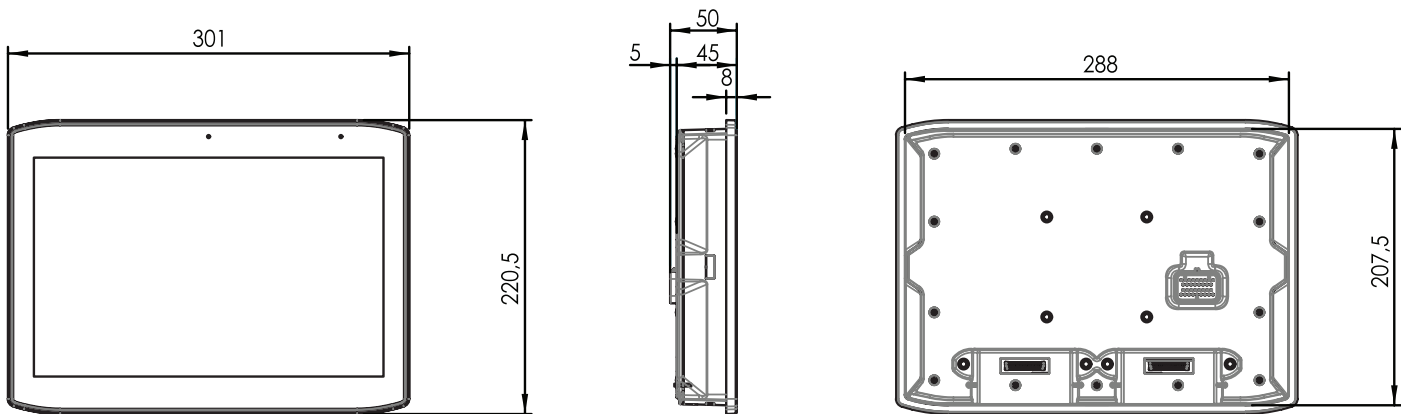
Optional features for XA105 include:

- Integrated push keys for enhanced HMI interaction
- Built-in Wi-Fi and Bluetooth connectivity
- Internal acceleration and temperature sensors for advanced diagnostics
- Plug-in expansion module for external camera integration

XA112 - Preliminary Technical Data



System Resources	
Display - Colors	12" TFT - 64K
Resolution	1280 x 800
Brightness	500 Cd/m2 typ.
Dimming	Yes
Touchscreen	Projected Capacitive, Multitouch, Optical Bonding
CPU	64-bit RISC quad core - 1.6GHz
Operating System	Linux RT
Flash	4 GB (eMMC pSLC)
RAM	2 GB
FRAM	64 KB
Real Time Clock, RTC Back-up	Yes, rechargeable battery
Interface	
Ethernet port	1 ports 10/100 Mbit/s
CAN port	2 (2.0B, FD, isolated, up to 1 Mbit/s)
USB port	2 (Host v.2.0 200mA)
Serial port	RS-485/RS-232 (optional)
Digital Inputs	4 (High side 0 - 32 V)
Digital Output	4 (Low side 500 mA)
Wi-Fi	IEEE 802.11a/b/g (optional)
Sensors	Temperature, 3-Axis Accelerometer, Environment Light
Buzzer	Yes
Expansion	1 slot for plug-in modules
Ratings	
Power supply	24 Vdc (8 to 32 Vdc)
Power consumption	0.5A at 24 Vdc (max.)
Power management key	Yes
Environment Conditions	
Operating Temperature	-30°C to +70°C
Storage Temperature	-40°C to +85°C
Operating / Storage Humidity	5-85% RH, non condensing
Protection Class	IP66, IP69K (front part) for the version without keys
Dimensions and Weights	
Faceplate LxH	301x220,5 mm (11.85x8.68") without keys
Cutout AxB	289x208,5 mm (11.37x8.20") without keys
Depth D	50 mm (1.96") without keys
Weight	2.1 kg
Approvals	
CE	Radio Equipment Directive 2014/53/EU (RED)
RCM	Yes



Ordering Information

Model	Part Number	Description
XA112	To be defined	12" Capacitive Sunlight-readable, IP66/69K, 2x CAN, 1x Eth., Wi-Fi, Multiprotocol, JMobile runtime